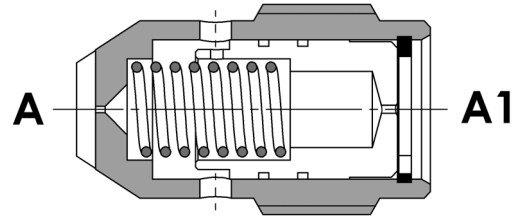
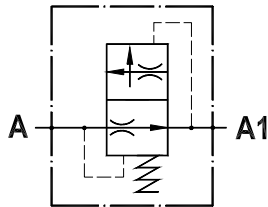


Valvola controllo discesa compensata
 Pressure compensated flow restricting valve



SPECIFICHE TECNICHE

Materiali: tutti i componenti sono in acciaio

Portata max.: vedere "tabella valori portata controllata"

Pressione max.: 210 bar

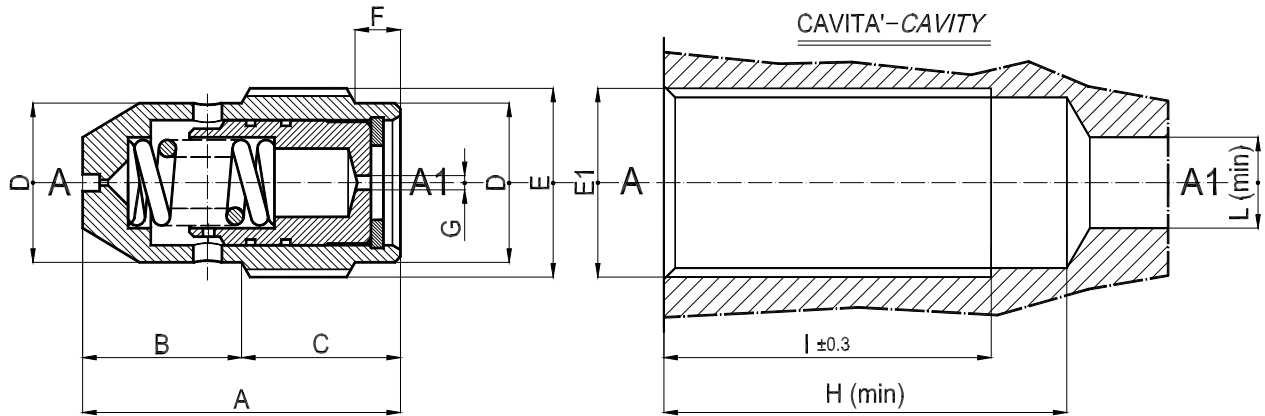
TECHNICAL SPECIFICATIONS

Materials: all the components are steel made

Rated flow: see "controlled flow setting list"

Max. pressure: 210 bar

Valvola controllo discesa compensata
Pressure compensated flow restricting valve



TIPO TYPE	A	B	C	D	E	F	G	PESO WEIGHT	CAVITA' - CAVITY				Coppia di serraggio Installation torque
	mm	mm	mm	mm	BSPP	mm			Ka	E1 BSPP	H mm	I mm	
VSC 1/4"	27	15	12	11	1/4"	3	FORO DOSATORE (VEDI TABELLA) - ORIFICE (SEE LIST)	0,012	1/4"	40	36	8	2
VSC 3/8"	28	14	14	14	3/8"	4		0,025	3/8"	44	39	11	3
VSC 1/2"	35	19	16	18	1/2"	3		0,050	1/2"	51	47	14	4

Disponibili a richiesta corpi maschio-femmina e femmina-femmina, vedere sezione Y -
 Available on request male-female and female-female housing, see section Y

ESEMPIO DI ORDINAZIONE - ORDERING CODE EXAMPLE

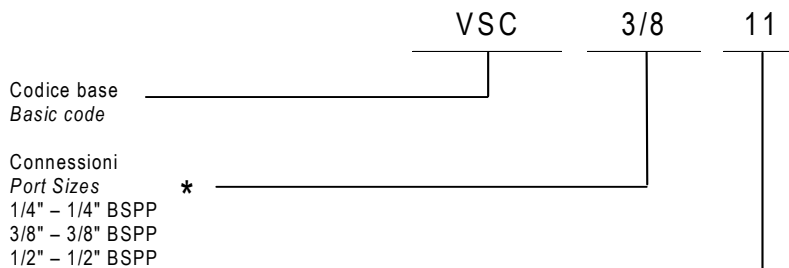


		Tabella valori di portata controllata - Controlled flow setting list									
VSC 1/4"	Q (l/min)	*1,5	*2	*3	*4	*5	*6	*7	*8	*9	*10
	Ø "G" (mm)	0,75	1,00	1,25	1,50	1,75	2,00	2,25	2,50	2,75	3,00
VSC 3/8"	Q (l/min)	*1	*2	*3	*4	*5	*6	*8	*10	*11	*12
	Ø "G" (mm)	0,75	1,25	1,75	2,00	2,25	2,50	3,00	3,50	4,00	4,25
VSC 1/2"	Q (l/min)	*8	*11	*14	*17	*22	*27	*32	*40	*47	-
	Ø "G" (mm)	2,00	2,50	3,00	3,50	4,00	4,50	5,00	5,50	6,00	-

Valori del flusso controllati a 100 bar, errore massimo: ± 10 % - Nominal flow at 100 bar, max. error: ± 10 %